

PULASKI COUNTY SPECIAL SCHOOL DISTRICT: COMBINED POPULATION

Table 5M1: 5th Grade Benchmark for Mathematics Spring 2008

	Below Scores	Below Basic	State Score	Basic	State Score	Proficient	State Score	Advanced	State Score	Not Proficient	State Score	Proficient Advanced	State Score
District	18%	14%	21%	19%	36%	39%	26%	28%	39%	33%	62%	67%	
Arnold Drive	5%	14%	5%	19%	38%	39%	52%	28%	10%	33%	90%	67%	
Baker	2%	14%	10%	19%	34%	39%	54%	28%	12%	33%	88%	67%	
Bates	27%	14%	28%	19%	27%	39%	19%	28%	55%	33%	46%	67%	
Bayou Meto	5%	14%	16%	19%	41%	39%	38%	28%	21%	33%	79%	67%	
Cato	7%	14%	18%	19%	45%	39%	30%	28%	25%	33%	75%	67%	
Clinton	15%	14%	24%	19%	45%	39%	17%	28%	39%	33%	62%	67%	
College Station	18%	14%	13%	19%	36%	39%	33%	28%	31%	33%	69%	67%	
Crystal Hill	7%	14%	16%	19%	34%	39%	43%	28%	23%	33%	77%	67%	
Dupree	24%	14%	18%	19%	38%	39%	20%	28%	42%	33%	58%	67%	
Harris	44%	14%	31%	19%	19%	39%	6%	28%	75%	33%	25%	67%	
Jacksonville	42%	14%	26%	19%	25%	39%	7%	28%	68%	33%	32%	67%	
Landmark	28%	14%	28%	19%	33%	39%	10%	28%	56%	33%	43%	67%	
Lawson	16%	14%	35%	19%	41%	39%	8%	28%	51%	33%	49%	67%	
Oak Grove	21%	14%	25%	19%	38%	39%	17%	28%	46%	33%	55%	67%	
Oakbrooke	12%	14%	22%	19%	45%	39%	21%	28%	34%	33%	66%	67%	
Pine Forest	9%	14%	14%	19%	43%	39%	34%	28%	23%	33%	77%	67%	
Pinewood	20%	14%	16%	19%	36%	39%	29%	28%	36%	33%	65%	67%	
Robinson	14%	14%	31%	19%	33%	39%	22%	28%	45%	33%	58%	67%	
Scott	32%	14%	9%	19%	27%	39%	32%	28%	41%	33%	59%	67%	
Sherwood	13%	14%	13%	19%	46%	39%	27%	28%	26%	33%	73%	67%	
Sylvan Hills	21%	14%	29%	19%	25%	39%	25%	28%	50%	33%	50%	67%	
Taylor	38%	14%	19%	19%	35%	39%	8%	28%	57%	33%	43%	67%	
Tolleson	12%	14%	19%	19%	40%	39%	30%	28%	31%	33%	70%	67%	

Table 5M2: 5th Grade Benchmark for Mathematics Spring 2007

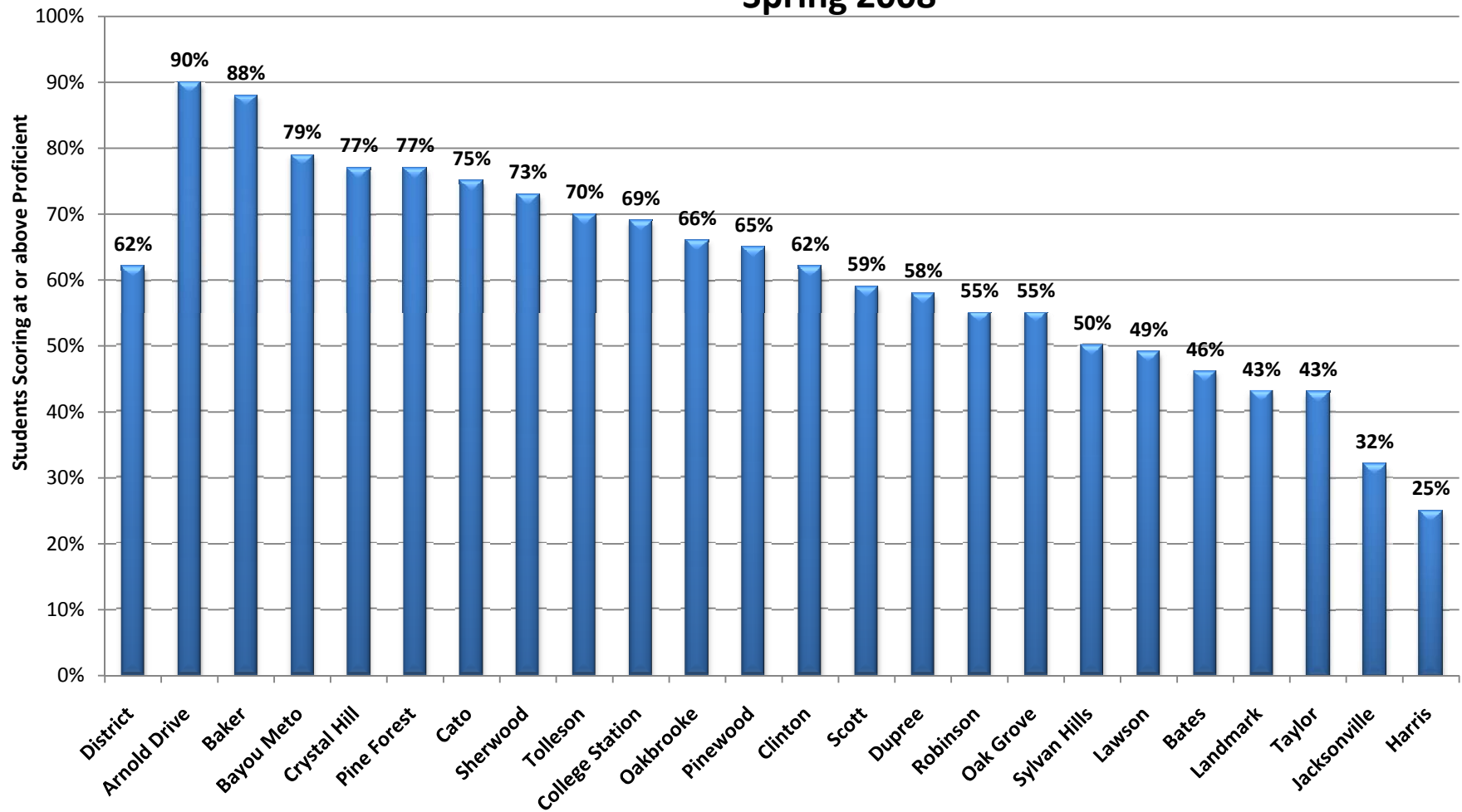
	Below Scores	Below Basic	State Score	Basic	State Score	Proficient	State Score	Advanced	State Score	Not Proficient	State Score	Proficient Advanced	State Score
District	24%	20%	19%	19%	35%	36%	21%	25%	43%	39%	56%	61%	
Arnold Drive	4%	20%	15%	19%	46%	36%	35%	25%	19%	39%	81%	61%	
Baker	13%	20%	20%	19%	28%	36%	38%	25%	33%	39%	66%	61%	
Bates	34%	20%	27%	19%	37%	36%	1%	25%	61%	21%	38%	61%	
Bayou Meto	15%	20%	9%	19%	52%	36%	24%	25%	24%	39%	76%	61%	
Cato	18%	20%	25%	19%	29%	36%	27%	25%	43%	39%	56%	61%	
Clinton	26%	20%	15%	19%	42%	36%	17%	25%	41%	39%	59%	61%	
College Station	16%	20%	4%	19%	24%	36%	57%	25%	20%	39%	81%	61%	
Crystal Hill	18%	20%	17%	19%	39%	36%	27%	25%	35%	39%	66%	61%	
Dupree	34%	20%	32%	19%	24%	36%	10%	25%	66%	39%	34%	61%	
Harris	30%	20%	23%	19%	23%	36%	25%	25%	53%	39%	48%	61%	
Jacksonville	42%	20%	23%	19%	27%	36%	8%	25%	65%	39%	35%	61%	
Landmark	25%	20%	36%	19%	27%	36%	11%	25%	61%	39%	38%	61%	
Lawson	23%	20%	23%	19%	43%	36%	13%	25%	46%	39%	56%	61%	
Oak Grove	23%	20%	27%	19%	38%	36%	12%	25%	50%	39%	50%	61%	
Oakbrooke	30%	20%	15%	19%	34%	36%	21%	25%	45%	39%	55%	61%	
Pine Forest	14%	20%	20%	19%	46%	36%	20%	25%	34%	39%	66%	61%	
Pinewood	20%	20%	15%	19%	41%	36%	24%	25%	35%	39%	65%	61%	
Robinson	26%	20%	21%	19%	28%	36%	25%	25%	47%	39%	53%	61%	
Scott	44%	20%	13%	19%	25%	36%	19%	25%	57%	39%	44%	61%	
Sherwood	30%	20%	11%	19%	34%	36%	25%	25%	41%	39%	59%	61%	
Sylvan Hills	25%	20%	25%	19%	34%	36%	15%	25%	50%	39%	49%	61%	
Taylor	31%	20%	20%	19%	41%	36%	8%	25%	51%	39%	49%	61%	
Tolleson	23%	20%	18%	19%	33%	36%	28%	25%	41%	39%	61%	61%	

Table 5M3: 5th Grade Benchmark Mathematics Spring 2007 Gains over 2008

	Below Scores	Below Basic	State Score	Basic	State Score	Proficient	State Score	Advanced	State Score	Not Proficient	State Score	Proficient Advanced	State Score
District	-6%	-6%	2%	0%	1%	3%	5%	3%	-4%	-6%	6%	6%	
Arnold Drive	1%	-6%	-10%	0%	-8%	3%	17%	3%	-9%	-6%	9%	6%	
Baker	-11%	-6%	-10%	0%	6%	3%	16%	3%	-21%	-6%	22%	6%	
Bates	-7%	-6%	1%	0%	-10%	3%	18%	3%	-6%	-6%	8%	6%	
Bayou Meto	-10%	-6%	7%	0%	-11%	3%	14%	3%	-3%	-6%	3%	6%	
Cato	-11%	-6%	-7%	0%	16%	3%	3%	3%	-18%	-6%	19%	6%	
Clinton	-11%	-6%	9%	0%	3%	3%	0%	3%	-2%	-6%	3%	6%	
College Station	2%	-6%	9%	0%	12%	3%	-24%	3%	11%	-6%	-12%	6%	
Crystal Hill	-11%	-6%	-1%	0%	-5%	3%	16%	3%	-12%	-6%	11%	6%	
Dupree	-10%	-6%	-14%	0%	14%	3%	10%	3%	-24%	-6%	24%	6%	
Harris	14%	-6%	8%	0%	-4%	3%	-19%	3%	22%	-6%	-23%	6%	
Jacksonville	0%	-6%	3%	0%	-2%	3%	-1%	3%	3%	-6%	-3%	6%	
Landmark	3%	-6%	-8%	0%	6%	3%	-1%	3%	-5%	-6%	5%	6%	
Lawson	-7%	-6%	12%	0%	-2%	3%	-5%	3%	5%	-6%	-7%	6%	
Oak Grove	-2%	-6%	-2%	0%	0%	3%	5%	3%	-4%	-6%	5%	6%	
Oakbrooke	-18%	-6%	7%	0%	11%	3%	0%	3%	-11%	-6%	11%	6%	
Pine Forest	-5%	-6%	-6%	0%	-3%	3%	14%	3%	-11%	-6%	11%	6%	
Pinewood	0%	-6%	1%	0%	-5%	3%	5%	3%	1%	-6%	0%	6%	
Robinson	-12%	-6%	10%	0%	5%	3%	-3%	3%	-2%	-6%	2%	6%	
Scott	-12%	-6%	-4%	0%	2%	3%	13%	3%	-16%	-6%	15%	6%	
Sherwood	-17%	-6%	2%	0%	12%	3%	2%	3%	-15%	-6%	14%	6%	
Sylvan Hills	-4%	-6%	4%	0%	-9%	3%	10%	3%	0%	-6%	1%	6%	
Taylor	7%	-6%	-1%	0%	-6%	3%	0%	3%	6%	-6%	-6%	6%	
Tolleson	-11%	-6%	1%	0%	7%	3%	2%	3%	-10%	-6%	9%	6%	

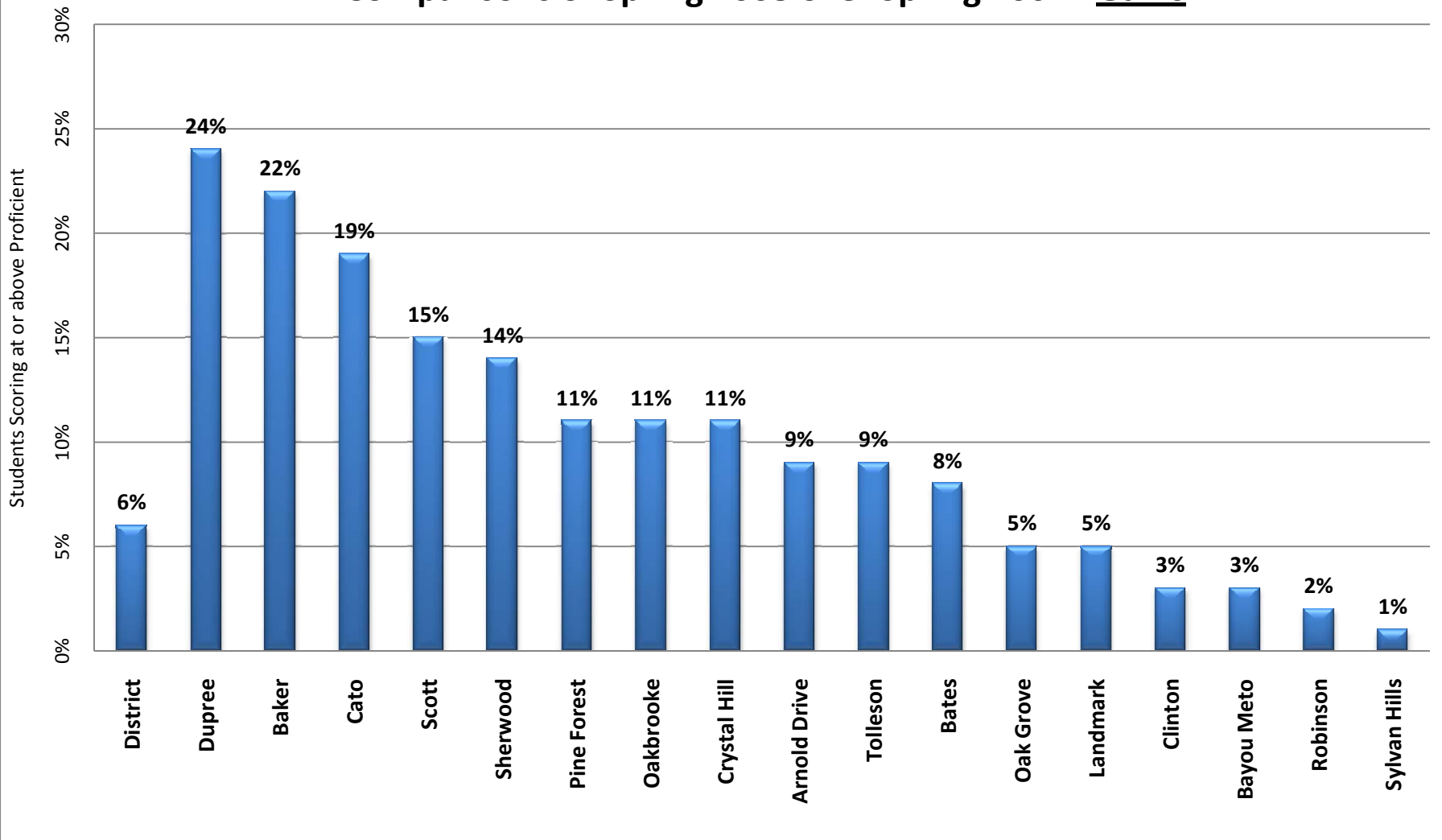
* Combined Population includes all students tested except those classified as 1st Year LEP.

PCSSD Comparisons of Students Scoring at or above Proficient 5th Grade Mathematics Combined Population Spring 2008



* Combined Population includes all students tested except those classified as 1st Year LEP.

**PCSSD Gains of Students Scoring at or above Proficient
5th Grade Mathematics Combined Population
Comparisons of Spring 2008 over Spring 2007: Gains**



* Combined Population includes all students tested except those classified as 1st Year LEP.